

DEMAIN JARDIN

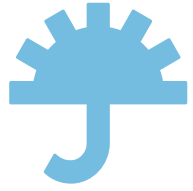


Table Nuage

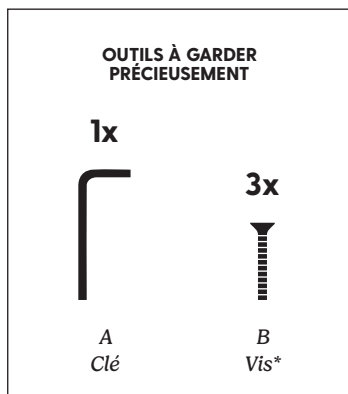
TABLE NUAGE

Tables basses gigognes

NOTICE POUR 3 TAILLES



MONTAGE EN SOLO



3x



C
Pieds

3x



D
Bouchons
liège

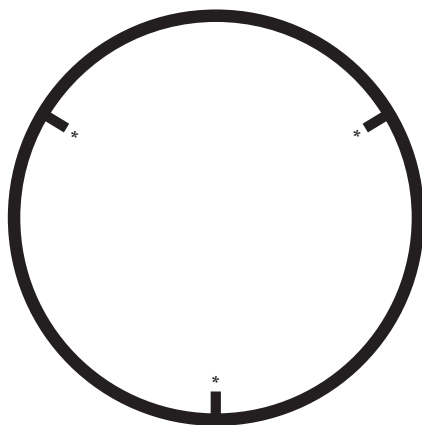
3x



E
Patins liège

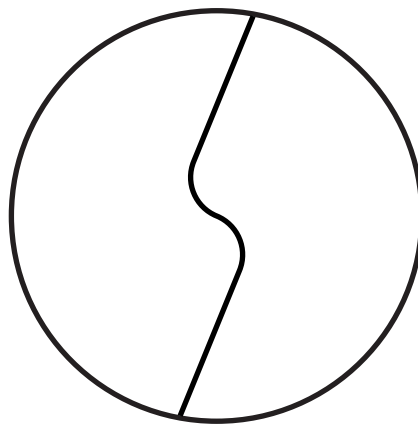
*À dévisser de la structure.

1x



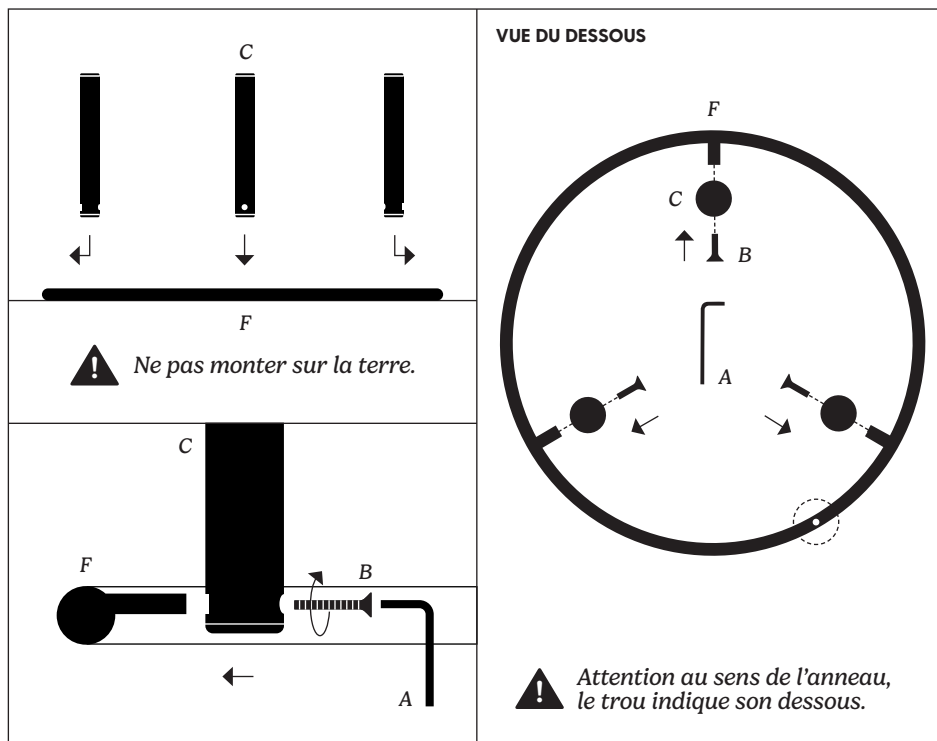
F
Cerceau

1x

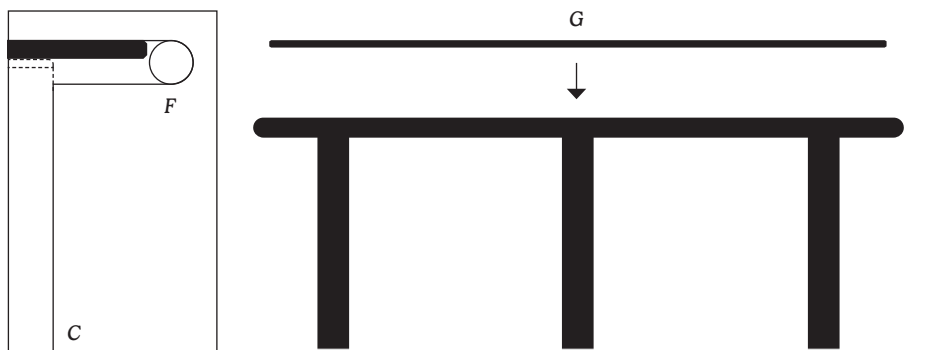


G
Plateau de verre

1° Enclencher et visser les trois pieds



2° Poser le verre sur les patins en liège





SUIVEZ-NOUS

   @demain.jardin

RETROUVEZ LES NOTICES SUR
www.demainjardin.fr

DEMAIN
JARDIN 